

SEASEA CLUB

Signature Events,
Curated for you

A Place for Connection and Sensory Journeys

Far more than just a club, SEASEACLUB is a sensory statement, a place for connection and creative explorations. An enclave where experience transforms into creative exploration and where the sea is no longer just context, it is concept.

From weddings and birthday celebrations to brand experiences. In the pages that follow, you will learn about our Barcelona venue and how to curate a truly unforgettable gathering.



/ INTRODUCTION

The Spot



The Spot

SEASEACLUB is situated in **Port Fòrum**, Barcelona's most contemporary marina and a landmark of modern urban design. Located where the city meets the horizon, this enclave offers the perfect balance between Barcelona's cosmopolitan energy and the serenity of the open sea.

Its monumental architecture and expansive waterfront spaces make it a haven of modern refinement, secluded from the tourist crowds yet perfectly connected to the city center and the technology district. With unparalleled views and an atmosphere of nautical sophistication, Port Fòrum is the stage where innovation and Mediterranean style converge to elevate every event.



The Architecture



The Architecture

The architecture, seamlessly integrated into the port environment, is distinguished by its panoramic views, multiple terraces lush with vegetation and aromatic landscaping. Its design – featuring brutalist concrete aesthetics with copper tones, saline glimmers, and reflections of light – creates an immersive atmosphere that is irresistible to urban life. Spread across four floors, allowing the venue to be a multifunctional space fully adaptable to any nature of event.



/ INTRODUCCIÓN

The Sustainable Design



The Sustainable Design

The venue embraces sustainability at every level. Its lush garden is thoughtfully designed as a harmonious ecosystem, where every plant thrives in balance with the space. This careful approach to nature and design has earned SEASEACLUB the **Biosphere Certification**, reflecting a commitment to conscious, responsible experiences.

Every corner invites guests to enjoy an extraordinary environment that feels alive, intentional and in tune with the Mediterranean spirit.





SEASEACLUB
SPACES

Spaces Overview

01.
THE WELCOME HALL
Immersive gallery space
and welcoming area

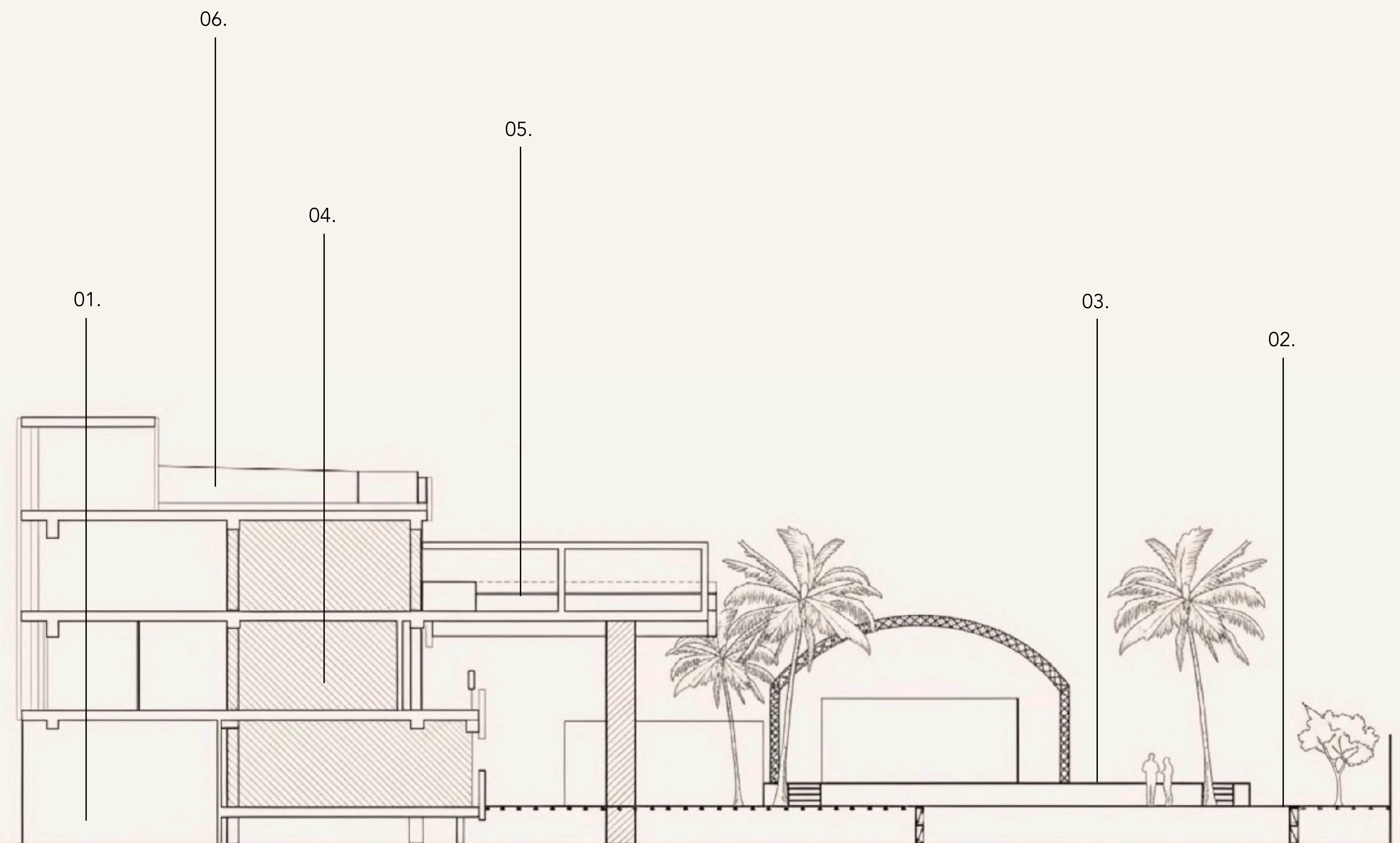
02.
THE GARDEN
Open-air setting and
aromatic landscape

03.
THE POOL
Dynamic Stage and
lounge area

04.
THE CLUB
Multifunctional area with
panoramic vistas

05.
THE RESTAURANT
Gather-around tables
and sharing style menus

06.
THE ROOF TOP
Signature cocktails and
uninterrupted sea views



/ VENUE IN DETAIL

The Welcome Hall



The Welcome Hall

The journey begins in our immersive welcoming area, a space designed to captivate from the very first second. Featuring a grand-scale digital canvas, this area serves as the ultimate platform for event storytelling and high-impact visual statements. With fully customizable content and dynamic chromatic lighting, the environment can be finely crafted to match your brand identity, ensuring a powerful and unforgettable first impression.

VISUAL EQUIPMENT

VIDEO CHARACTERISTICS

2 LED screens P2.6

6x2.5 m and 6x3.5 m

36 total sqm

Resolution 2.304 × 2.304 px

Processor Novastar VX1000



/ VENUE IN DETAIL

The Garden



The Garden

The Garden stands as our most iconic and representative setting, a botanical sanctuary that captures the very essence of Mediterranean luxury. Meticulously designed with a deep commitment to sustainable landscaping, this lush aromatic garden invites guests into a multi-sensory experience where the fragrance of native flora blends seamlessly with the coastal breeze.

The expansive layout flows naturally, weaving together sofa lounges and three strategically positioned bars that ensure a dynamic yet intimate environment for high-end socializing. At the heart of this green oasis, a professional stage serves as the premier focal point for live performances.



The Garden

GROUND FLOOR

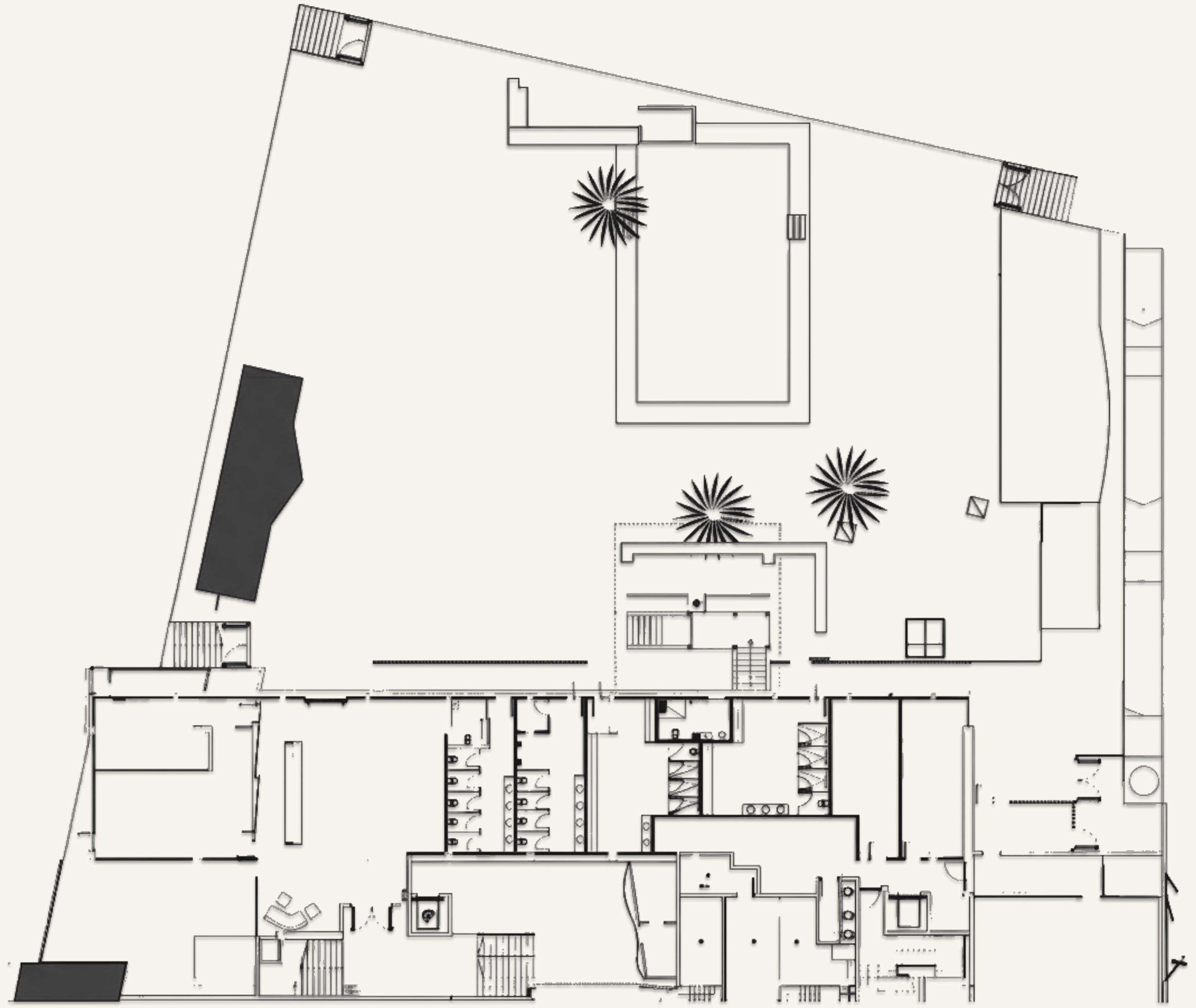
CAPACITY

1.495 sqm surface

500 guests seated

1.000 guests standing

1.400 guests dancing



The Garden

A/V EQUIPMENT

LIGHT CHARACTERISTICS

6 units SLS-ARC/STROBE 800IP

6 units SLS-PIX BAR 1815 IP

6 units SLS-BEAM 200 IP65

Console GrandMA3

Ambient Lighting

VIDEO CHARACTERISTICS

Screen LED SLS-RO6

6,40x3,20 m, 20 sqm

Resolution 1,728 × 480 px

Processor Novastar VX600

AUDIO CHARACTERISTICS

L-Acoustics sound system

8 enclosures DV-DOSC array format

7 subwoofers DV-DOSC

4 enclosures front-fill

4 DV-SUB delay system stack format

4 DV-DOSC delay system stack format

3 power amps L-Acoustics LA12X

4 power amps L-Acoustics LA8

2 boxes A12 Focus DJ Booth

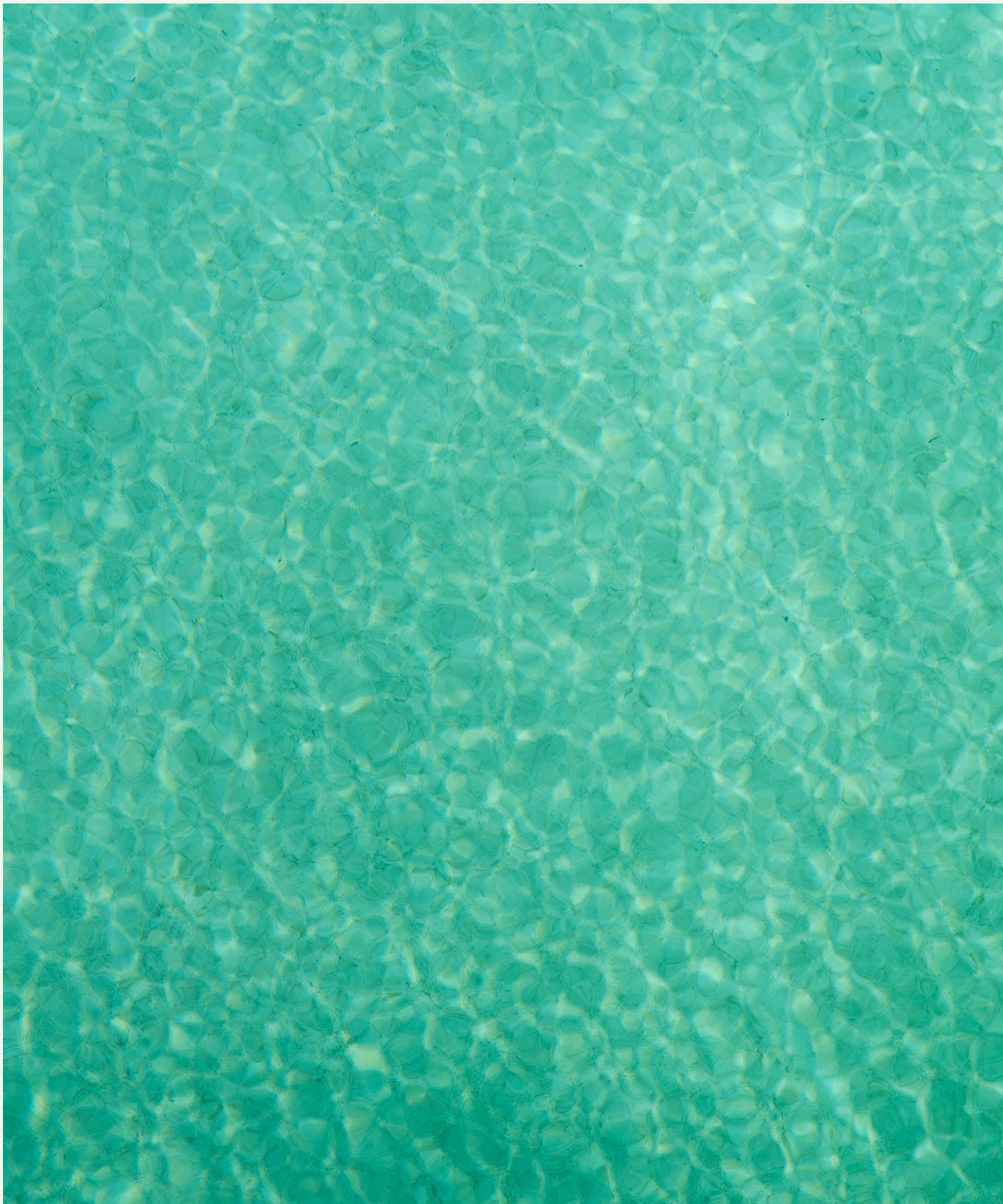
2 subwoofers SB18 DJ Booth

L-Acoustics LA4X DJ Booth



/ VENUE IN DETAIL

The Pool



The Pool

Our poolside area, featuring exclusive day lounges, is the ultimate setting for high-impact, large-scale events. Designed to transition seamlessly from sun-drenched daytime celebrations to alluring moonlit soirées, the space offers an electric atmosphere for any occasion.

The pool itself becomes a dynamic stage, perfectly suited for live entertainment and spectacular aquatic performances that create an unforgettable “wow” factor. To complete the sensory journey, the area features a full-service bar and dedicated catering on-site, offering a curated selection of signature sips and gourmet bites. From the first ray of sun to the last beat of the night, this is where entertainment, design and gastronomy converge.



/ VENUE IN DETAIL

The Gallery



The Gallery

An open-plan gallery designed for versatility. This multifunctional space is flooded with natural light through expansive floor to ceiling windows, offering guests breathtaking panoramic vistas that merge the interior with the surrounding horizon.

Complementing its contemporary architecture, landscaped terraces provide a serene botanical escape and overview of The Garden.

The Club features Hi-Fi acoustic system and two large-format screens, creating an immersive setting for visual and high-impact presentations. A sleek, integrated bar serves as the social heart of the dance floor, perfectly positioned to cater to everything from corporate summits to exclusive private celebrations. It is a space where professional requirements and premium aesthetics coexist, providing the ultimate canvas for events that demand both substance and a cool atmosphere.



The Gallery

1ST FLOOR

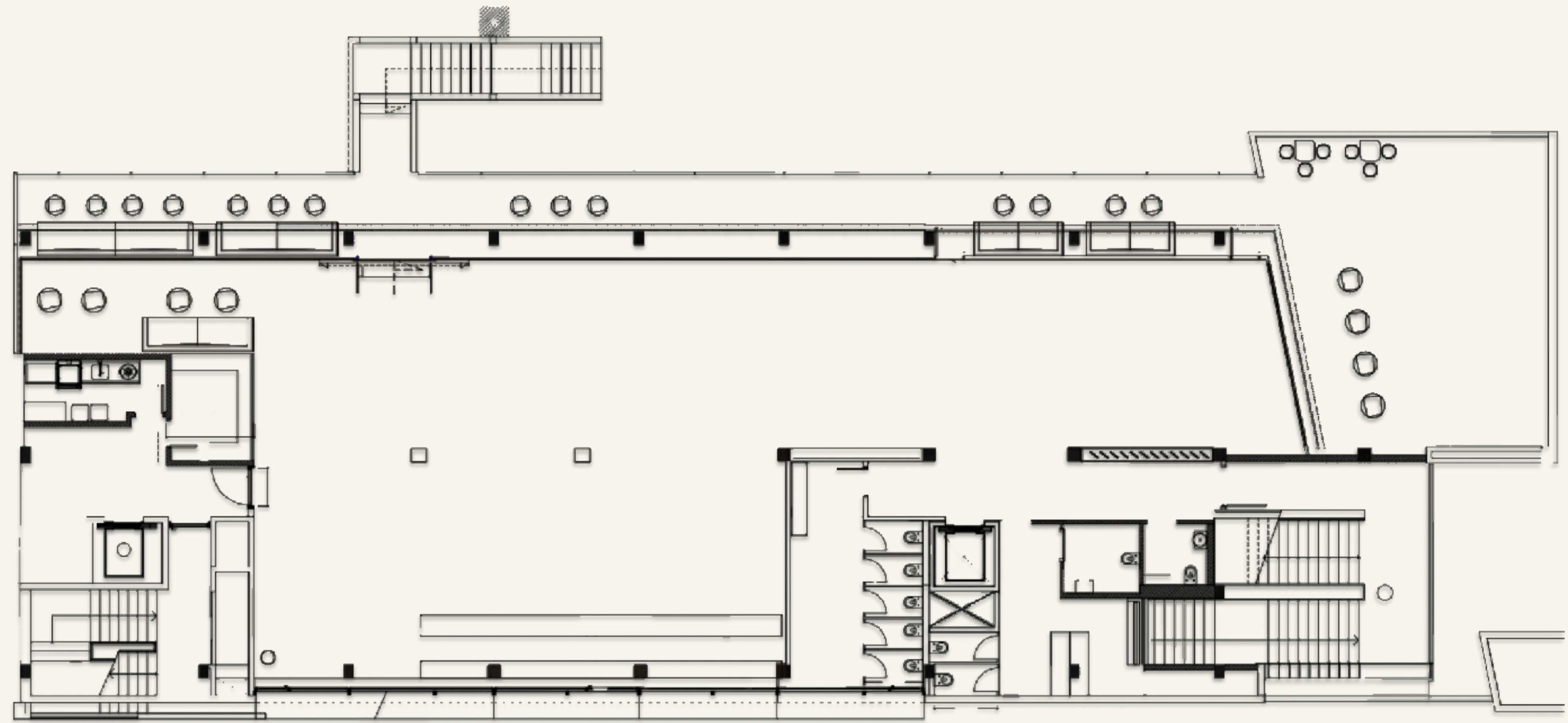
CAPACITY

550 sqm surface

250 guests seated

450 guests standing

500 guests dancing



The Gallery

A/V EQUIPMENT

LIGHT CHARACTERISTICS

8 units SLS-ARC/STROBE 800IP
Console GrandMA3
Ambient Lighting

VIDEO CHARACTERISTICS

2 LED screens P.26
11.25 sqm each
Resolution 1,728 × 960 px
Processor Novastar VX600

AUDIO CHARACTERISTICS

4 loudspeaker Funktion-One RES4
2 upper bass Funktion-One F215
2 subwoofer Funktion-One F218 Mk1
6 subwoofer Funktion-One F121
2 loudspeaker Funktion-One F1201
Power Amp MC2 E25 and MC2 E45

DJ Booth 2 Funktion-One PSM318
DJ Booth Backline:
5 Pioneer CDJ-3000
1 Pioneer DJM-V10
1 Allen & Heath Xone:96



/ VENUE IN DETAIL

The Restaurant



The Restaurant

MUA MUA Restaurant is a hotspot space where gastronomy, music, and the sea blend seamlessly. The restaurant is designed to be in constant harmony with its maritime surroundings. With panoramic views of Port Forum, every sunset becomes a breathtaking spectacle. Our culinary concept reinvents gastronomic classics alongside *Tarantino*'s: bold creations, unique, original dishes with a creative twist. From midday vermouth to late-night cocktails, our food and drink menu is designed to accompany every moment of the day. To complete the **MUA MUA experience**, a handpicked selection of artists and DJs set the true rhythm with live sessions and performances.

This is a space that can be dressed up or down to suit any occasion all while retaining its signature contemporary aesthetic and social, celebratory energy.



The Restaurant



2ND FLOOR

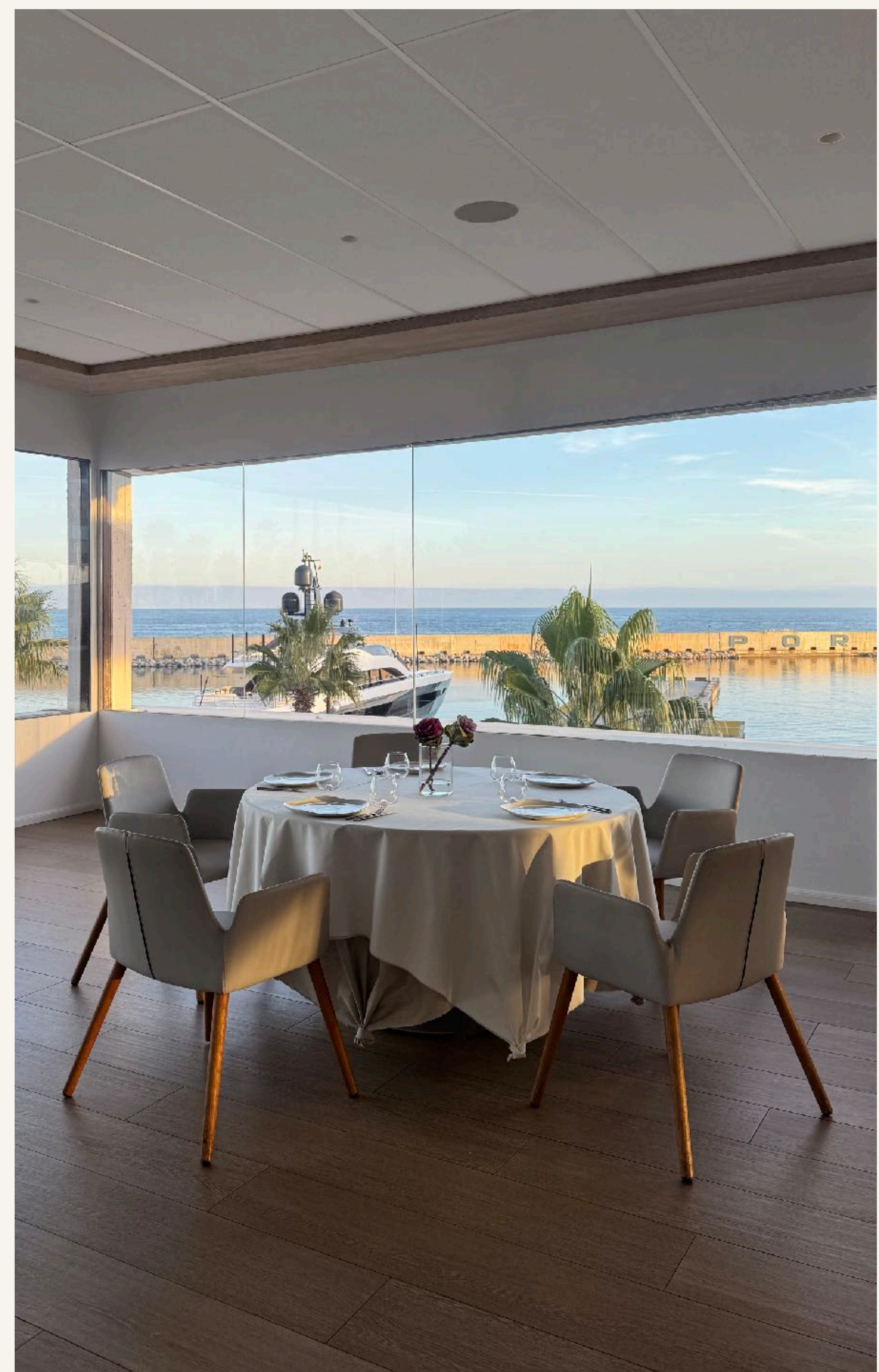
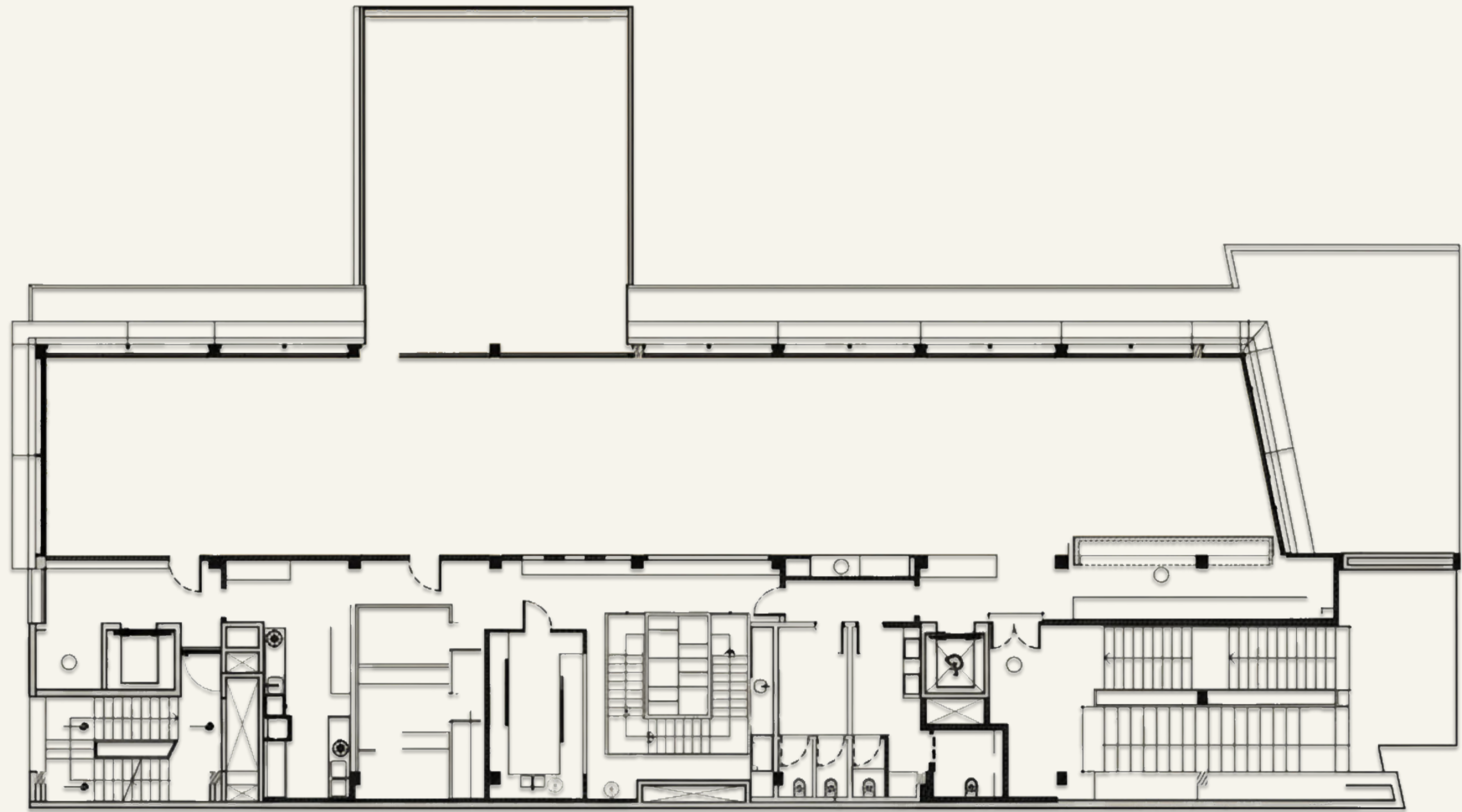
CAPACITY

309 sqm surface

200 guests seated

300 guests standing

0 guests dancing



The Restaurant Terrace

Perched gracefully above the Garden, MUA MUA Terrace offers the breathtaking sensation of being suspended over the sea. This architectural gem provides an intimate setting where the sound of the waves and the seagulls create a serene backdrop for exclusive gatherings. It is a space designed for those seeking a warmer, more secluded atmosphere, where every event feels like a private escape caught between the sky and the tide.



/ VENUE IN DETAIL

The Roof Top



The Roof Top

On the top floor, you will find the building's most exclusive terrace, offering **stunning 360° panoramic views** of the Maresme bay and Port Fòrum. This open-plan space is fully adaptable to any event's needs. Additionally, it offers the option of a private, direct entrance via the Fòrum Bridge for a truly seamless arrival experience.

Ideal for daytime and evening gatherings, from cocktail receptions to live music with the sunset as your backdrop. An exceptional Mediterranean viewpoint with a capacity for up to 400 guests.



The Roof Top

TOP FLOOR

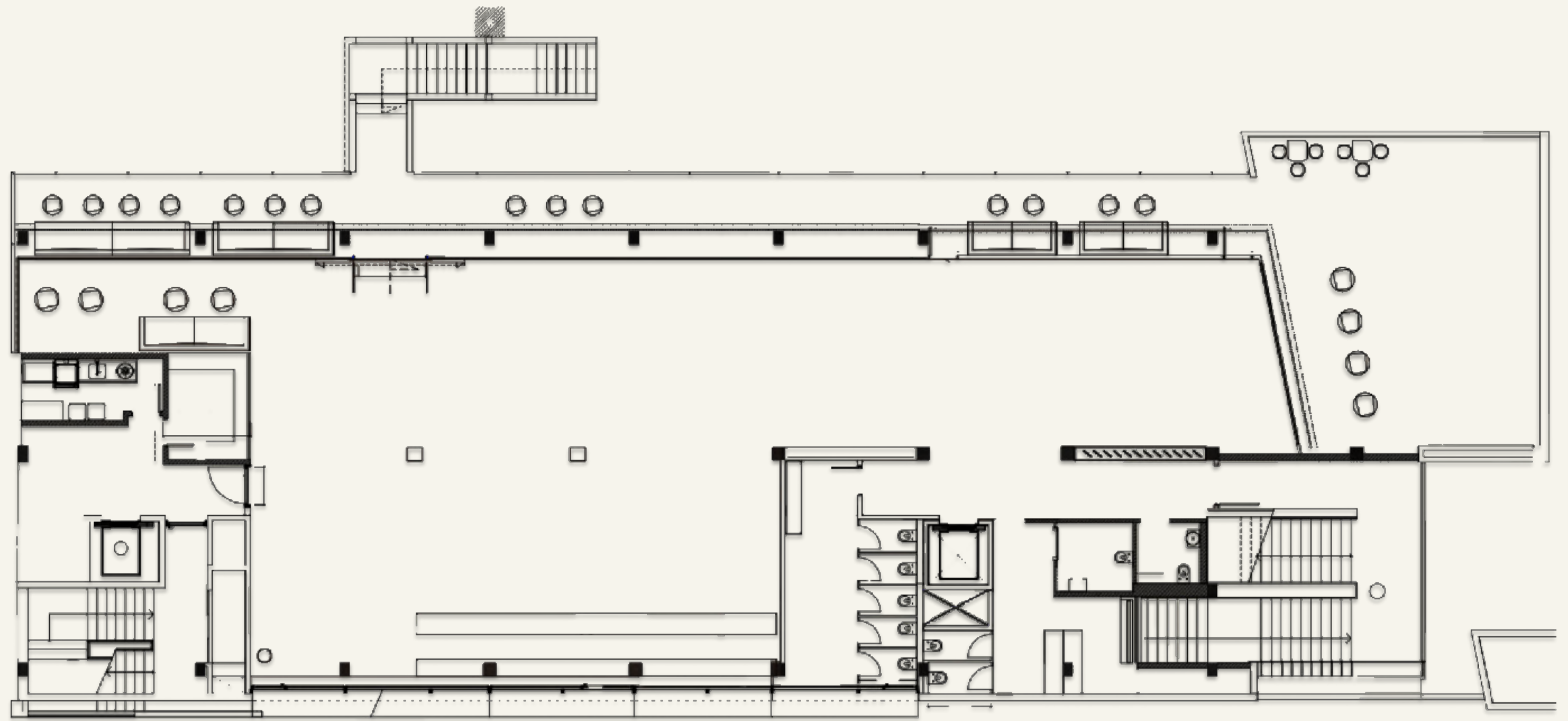
CAPACITY

362 sqm surface

150 guests seated

400 guests standing

0 guests dancing





From social celebrations
to brand experiences

Event Formats

- Corporate events
- Brand activations
- Wedding ceremonies
- Birthday celebrations
- Custom gatherings

Whether you're looking to host an intimate reunion or a large-scale celebration, our spaces can be tailored to your vision. In addition to traditional gatherings, we welcome custom concepts and experiences that blur boundaries.

Whether you choose a full property buyout or one of our partial options, the SEASEACLUB team is here to support.

BRANDS WE WORKED WITH



Planning with us

Now that you're familiar with our spaces and event formats, your planning journey can begin. We will focus together on what matters most: the celebration itself.

01.

Visualize Your Gathering

02.

Explore Decor and Entertainment Options

03.

Discuss Specific Needs with Our Events Team

05.

Receive a Final Proposal

Food & Beverage

Our culinary proposal is a tribute to the Mediterranean with a deep respect for locally sourced ingredients. Each menu is a signature creation, meticulously designed to adapt to the unique nature of your event.

We offer set menus, open-bar packages, *à la carte* selections and custom experiences curated by our Head Sommelier and Head Chef.



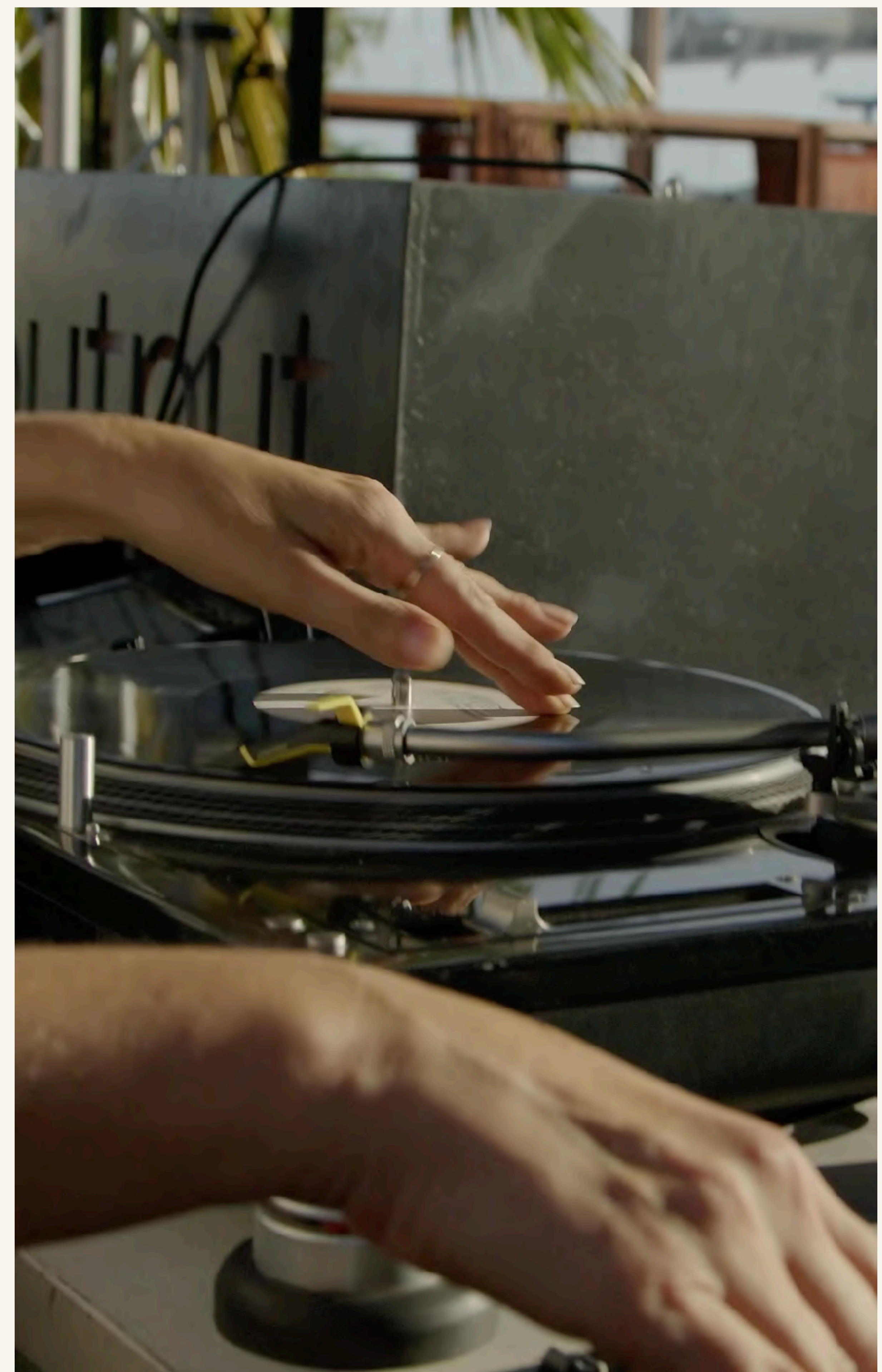
Styling

We believe every event should have its own soul. Beyond our architectural beauty, we offer a bespoke styling and decoration service designed to bring your vision to life. From curated floral arrangements to custom furniture layouts, our team pays meticulous attention to every detail, ensuring the space reflects your brand's identity or your celebration's unique character.

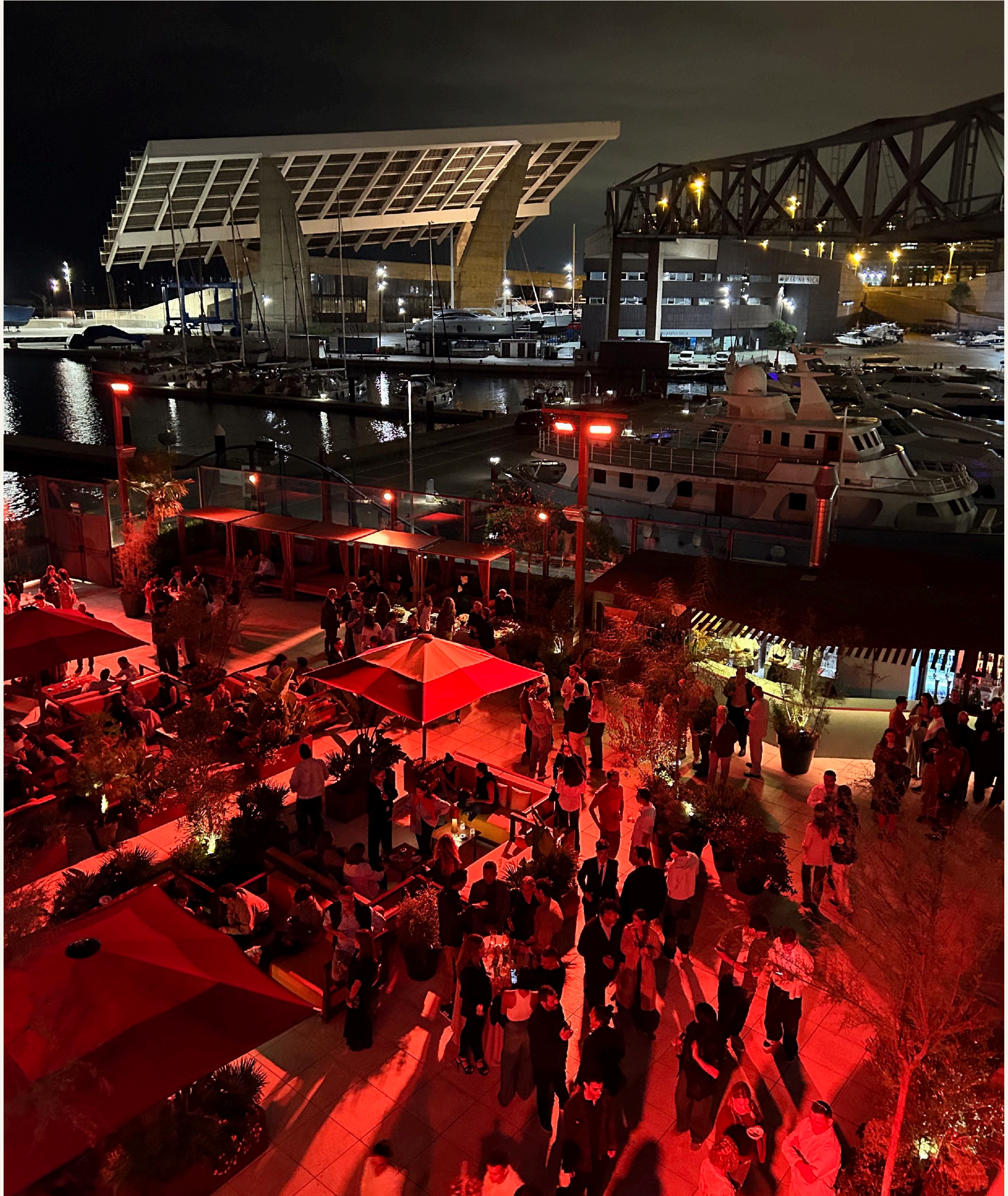


Curated Sound

With a signature portfolio of DJs and sound artists, SEASEACLUB offers curated soundscapes for your gathering. From immersive live performances to energetic DJ sets for dancing or subtle background music, our program adapts to your vision with an eclectic range of sounds.



Tailored Programming



Tailored Programming

Unlock the full potential of SEASEACLUB with our bespoke programming services. Whether you are looking to energize your team with creative activities, enchant your guests with live entertainment, or celebrate an intimate wedding overlooking the sea, our space adapts to your narrative.

By taking over the entire venue, you gain total creative freedom to mold each floor into a different chapter of your event. From the botanical serenity of The Garden to the vibrant pulse of our live stage, we weave together entertainment, branding and emotion into a one-of-a-kind sensory journey.



Exclusive Facilities

Orchestrating an event centered around nautical pursuits is an unparalleled way to cultivate team synergy and foster professional bonds. At Port Forum, we offer a curated selection of premium water sports, including: jet skis and flyboarding for the thrill-seekers, wakeboarding and private vessels or luxury inflatables for a more relaxed experience.

For those seeking a collective journey, we provide the option to charter **group sailing vessels**, with bespoke mooring arrangements available at the port upon request. Each of these activities is designed to offer a truly unique experience for water sports aficionados.



/ PLANNING WITH US

Getting in Touch

For any questions and inquiries, we invite you to contact our team at events@seaseaclub.com



Every great event starts with a dream.
We'd love to be the place where yours comes true.

+34 646 142 962 / +34 600 868 046
CARRER PORT ESPORTIU 14P, 08930 BARCELONA